

BlackJack™

Why gamble on quality!

#13500

Dust Cutter Instructions

Dust



Cutter®

Patent Pending



WARNING! BLADE EXPOSURE. INSTALL, MAINTAIN AND REMOVE DUST CUTTER SYSTEM WITH SAW OFF AND UNPLUGGED.

Safety Instructions

1. Before installing or removing the Dust Cutter, turn off and **UNPLUG** table saw.
2. Do not cut, grind or sand metals or use any materials that produce sparks, with the Dust Cutter installed.
3. Always operate the table saw with the safety guard in place, properly adjusted and in good working order.
4. Do not clear or empty dust from the Dust Cutter while the saw is operating.
5. Do not install the Dust Cutter on any saw in any other manner than described in the installation section below.
6. Empty the Dust Cutter frequently to prevent excessive dust which could result in a fire hazard.
7. Openings in the table saw or between the table saw and the stand should not be blocked unless approved by the table saw manufacturer.
8. Frequently empty vacuum, clean filter and periodically remove and shake out the Dust Cutter.

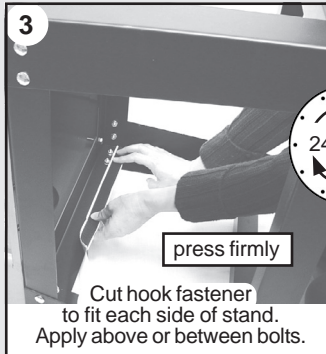
How to Install Dust Cutter



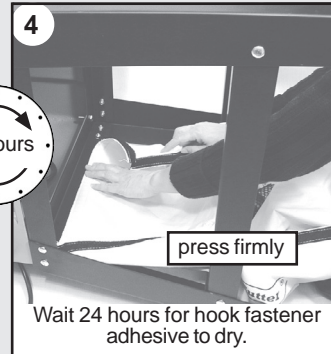
Lay table saw flat on floor.



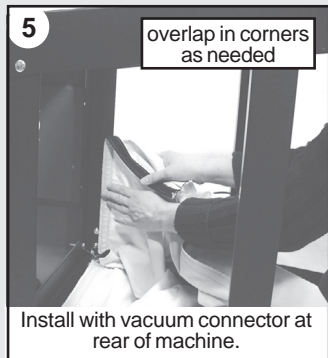
Clean using water. Allow to dry completely.



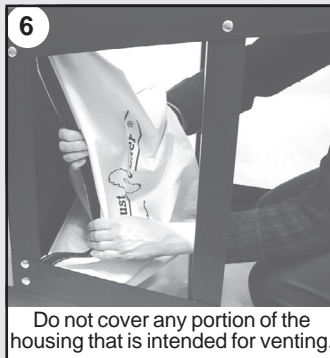
Cut hook fastener to fit each side of stand. Apply above or between bolts.



Wait 24 hours for hook fastener adhesive to dry.



Install with vacuum connector at rear of machine.



Do not cover any portion of the housing that is intended for venting.



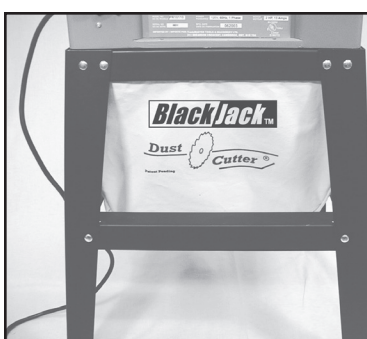
Two Year Limited Warranty - Keen Products will repair or replace, at its expense and its option, any Dust Cutter which in normal use has proven to be defective in workmanship or material, provided that the customer returns the product prepaid to Keen Products with proof of purchase within two years. Under no circumstances will Keen Products be liable for incidental or consequential damages resulting from defective products. This warranty is Keen Products sole warranty and sets forth the customer's exclusive remedy, with respect to defective products; all other warranties, express or implied, whether of fitness for purpose, or otherwise, are expressly disclaimed by Keen Products.

Keen Products, PO Box 3051, Kingston, RI 02881

Imported by Workshop Supply Inc.
Embroid ON Canada NOJ 1J0
Copyright© 2005 Workshop Supply Inc.

3 Operation Modes

Follow above SAFETY INSTRUCTIONS.



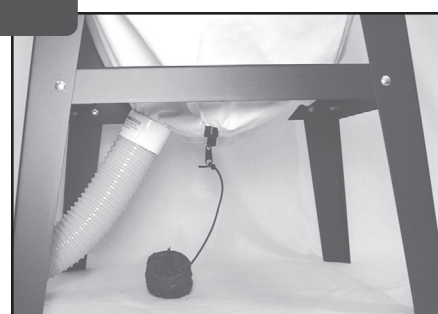
COLLECTOR MODE

1. The vacuum plug must be installed securely into the vacuum connector and the Dust Cutter zipper in the closed position.
2. To empty, place a container under the zipper and unzip the Dust Cutter.
3. Shake the Dust Cutter until empty.



FUNNEL MODE

1. Place a trash receptacle under the Dust Cutter and open zipper.
2. Plug in the table saw and resume cutting.
3. If dust does not flow freely into receptacle, turn off & unplug table saw. Remove obstructions.



VACUUM MODE

1. Remove connector plug and insert vacuum hose. Use hard end of 2-1/2" hose. For 1-1/4" (or smaller) use enclosed rubber bushings.
2. Plug in table saw, turn vacuum on, then turn on table saw.
3. If dust does not flow freely into vacuum, turn off & unplug table saw & vacuum. Remove obstructions.